

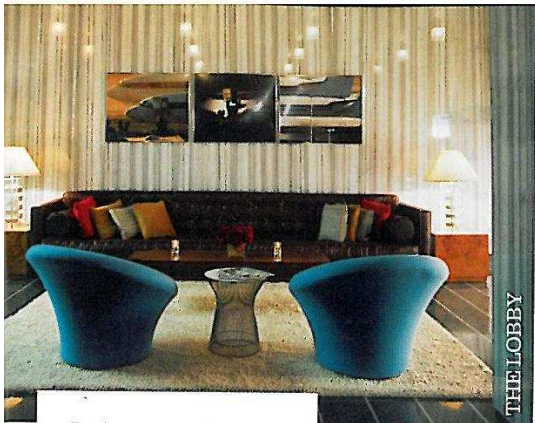
ELLE

OCTOBER 2011
£3.80

TRUE *Brit*

AGYNESS DEYN





THE LOBBY

THE LOOK

Taking inspiration from the 1960s, when the hotel's Central Park South location was having a bit of a moment, interiors guru Steven Sclaroff has killed out this 88-room boutique hotel in a cool Mod style. You enter through a narrow lobby – extra busy at night with traffic to the (in-house) Blue Ribbon Sushi Bar & Grill – and ride the ponyskin lift upstairs, where rooms range from the 16 very snug Pods (really best for singles) to the twin, 300-square-metre penthouses, with their lofty ceilings and

real fireplaces. Expect fashion prints from the legendary photographer Guy Bourdin, black-tiled bathrooms, lots of teak and chrome, statement lighting and bright furnishings, like zigzag fabrics and splashes of Yves Klein Blue.



BEDROOM

ELLEtravel



LOFT SUITE

THE VIBE

Arty, sleek and fun. Uniforms by Rag & Bone set a stylish note, while the in-room entertainment includes pre-loaded iPods and plasma screens. The hotel actually opened in 2007, but it feels very now.

HOT HOTEL

6 COLUMBUS, NEW YORK CITY

Is this New York's COOLEST uptown hotel? We think so. It's the downtown FEEL that seals it



ABOVE'S ROOFTOP BAR

THE FOOD

Blue Ribbon Sushi Bar & Grill may have had mixed reviews locally, but we loved it for the buzzy atmosphere and succulent sushi (the spicy tuna and tempura flakes maki were top choices). Another big hit is the rooftop bar, Above 6,

which, with its cherry blossom, lanterns and loungey vibe, is one of the Big Apple's prettiest alfresco drinking dens. You get bird's-eye views of downtown and over Central Park, and the retractable roof means rain never stops play.

GETTING THERE

6 Columbus, 6 Columbus Circle, New York, NY 10019. Enq (001 212) 204 3000; thompsonhotels.com. Doubles from about £173, room only. Virgin Atlantic flies from London Heathrow to JFK and Newark from £445 return. Enq virgin-atlantic.com; 0844 874 7747



BATHROOM

HANDY FOR...

Opposite the Time Warner building on Columbus Circle and right by Central Park, you're well placed for the seriously luxe shops of Madison Avenue (Chloé, DKNY, and a fabulously OTT Versace on 52nd Street). The impressive Guggenheim and Metropolitan Museum of Art are both a healthy tramp across Central Park and, if all this Uptownery gets too much, you're right next to the stop for the A train to whisk you south.



CENTRAL PARK